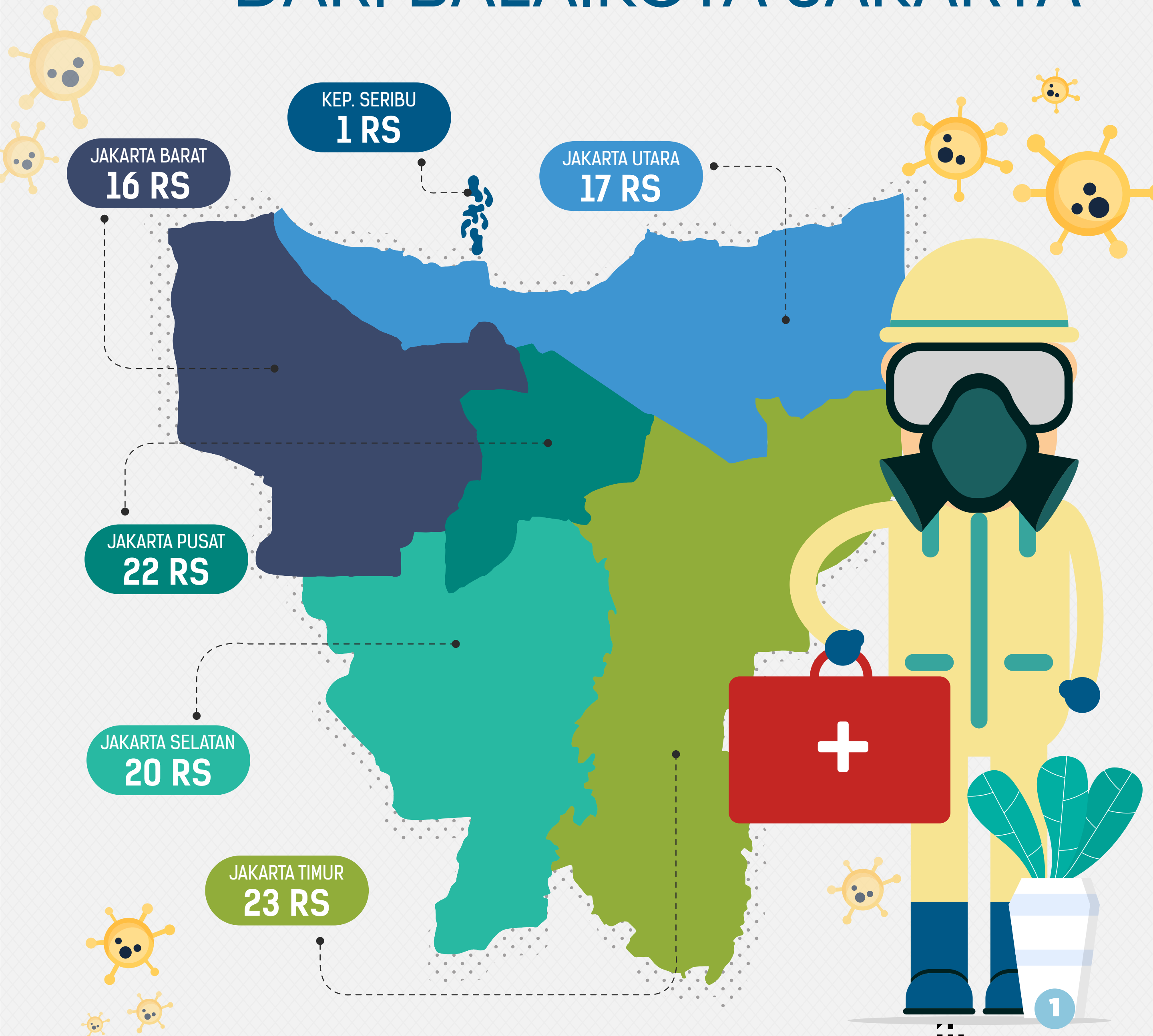




DISTRIBUSI APD DARI BALAIKOTA JAKARTA





DAFTAR NAMA RUMAH SAKIT

#jakartatanggapcorona

+ Jakarta Barat

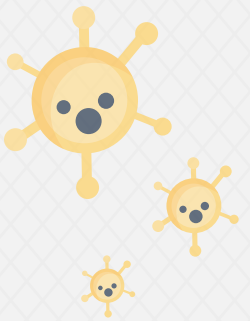
- ▶ RSUD Cengkareng
- ▶ RS PELNI
- ▶ RS Ciputra Citra Garden City
- ▶ RS Graha Kedoya
- ▶ RS Hermina Daan Mogot
- ▶ RS Mitra Keluarga Kalideres
- ▶ RS Royal Taruma
- ▶ RS Soeharso Heerdjan
- ▶ RS Sumber Waras
- ▶ RS Pondok Indah-Puri Indah
- ▶ RS Cinta Kasih Tzu Chi
- ▶ RSAB Harapan Kita
- ▶ RSUD Taman Sari
- ▶ RSUD Kalideres
- ▶ RSUD Kembangan
- ▶ RS Jantung Harapan Kita

+ Jakarta Pusat

- ▶ RS Jantung Harapan Kita
- ▶ RSPAD Gatot Soebroto
- ▶ RSAL Mintoharjo
- ▶ RS Tarakan
- ▶ Labkesda
- ▶ AGD
- ▶ Dinas Kesehatan
- ▶ RS Mitra Keluarga Kemayoran
- ▶ RS Pelni
- ▶ RS St Carolus
- ▶ RS Yarsi
- ▶ RS YPK Mandiri
- ▶ RSUPN Cipto Mangunkusumo
- ▶ RS Abdi Waluyo
- ▶ RS Husada
- ▶ RSIJ Cempaka Putih
- ▶ RSUD Sawah Besar
- ▶ RSUD Kemayoran
- ▶ RSUD Cempaka Putih
- ▶ RSUD Tanah Abang
- ▶ RSUD Johar Baru
- ▶ UPT PPKP

+ Jakarta Selatan

- ▶ RSUP Fatmawati
- ▶ RSUD Pasar Minggu
- ▶ RS Jakarta Medical Center
- ▶ RS Mayapada TB Simatupang
- ▶ RS Medistra
- ▶ RS Metropolitan Medical Centre
- ▶ RS MRCCC Semanggi
- ▶ RS Pondok Indah - Pondok Indah
- ▶ RS Pusat Pertamina
- ▶ Rumkital Marinir Cilandak
- ▶ RS Jakarta
- ▶ RS Siloam Group
- ▶ RS Prikasih
- ▶ RSUD Tebet
- ▶ RSUD Mampang Prapatan
- ▶ RSUD Jatipadang
- ▶ RSUD Kebayoran Baru
- ▶ RSUD Pesanggrahan
- ▶ RSUD Jagakarsa
- ▶ RSUD Kebayoran Lama



+ Jakarta Timur

- ▶ RSUP Persahabatan
- ▶ RSU Bhayangkara Tk. I R. Said Sukanto
- ▶ RSKD Duren Sawit
- ▶ RS Harapan Jayakarta
- ▶ RS Haji Jakarta
- ▶ RS Islam Pondok Kopi
- ▶ RS Jantung Bina Waluya
- ▶ RS Premier Jatinegara
- ▶ RSPAU Dr. Esnawan Antariksa
- ▶ RS Harapan Bunda
- ▶ RS Moh. Ridwan Meuraksa
- ▶ RS Hermina Jatinegara
- ▶ RS Kesdam Jaya Cijantung
- ▶ RS Harum Sisma Medika
- ▶ RS Pusdikkes Kodiklat TNI AD
- ▶ RS Resti Mulya
- ▶ RSUD Pasar Rebo
- ▶ RSUD Budhi Asih
- ▶ RSUD Matraman
- ▶ RSUD Kramat Jati
- ▶ RSUD Ciracas
- ▶ RSU Adhyaksa
- ▶ RSUD Cipayung

+ Jakarta Utara

- ▶ RSPI Sulanti Soeroso
- ▶ RSUD Koja
- ▶ RS Atma Jaya
- ▶ RS Gading pluit
- ▶ RS Mitra Keluarga Kelapa Gading
- ▶ RS Mulyasari
- ▶ RS Pantai Indah Kapuk
- ▶ RS Pluit
- ▶ RS Port Medical Center
- ▶ RS Satya Negara
- ▶ RS Royal Progress
- ▶ RSIA Santo Yusuf
- ▶ RS Firdaus
- ▶ RSUD Tanjung Priok
- ▶ RSUD Tugu Koja
- ▶ RSUD Cilincing
- ▶ RSUD Pademangan

+ Kep. Seribu

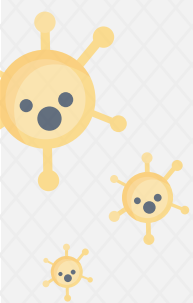
- ▶ RSUD Kabupaten Adm Kepulauan Seribu

+ Tangerang Selatan

- ▶ RS Mitra Keluarga Bintaro
- ▶ RS Pondok Indah-Bintaro

+ 44 Puskesmas

+ 6 Sudinkes



f y Pemprov DKI Jakarta

@DKIJakarta

jakarta.go.id

kota kolaborasi



f y Pemprov DKI Jakarta

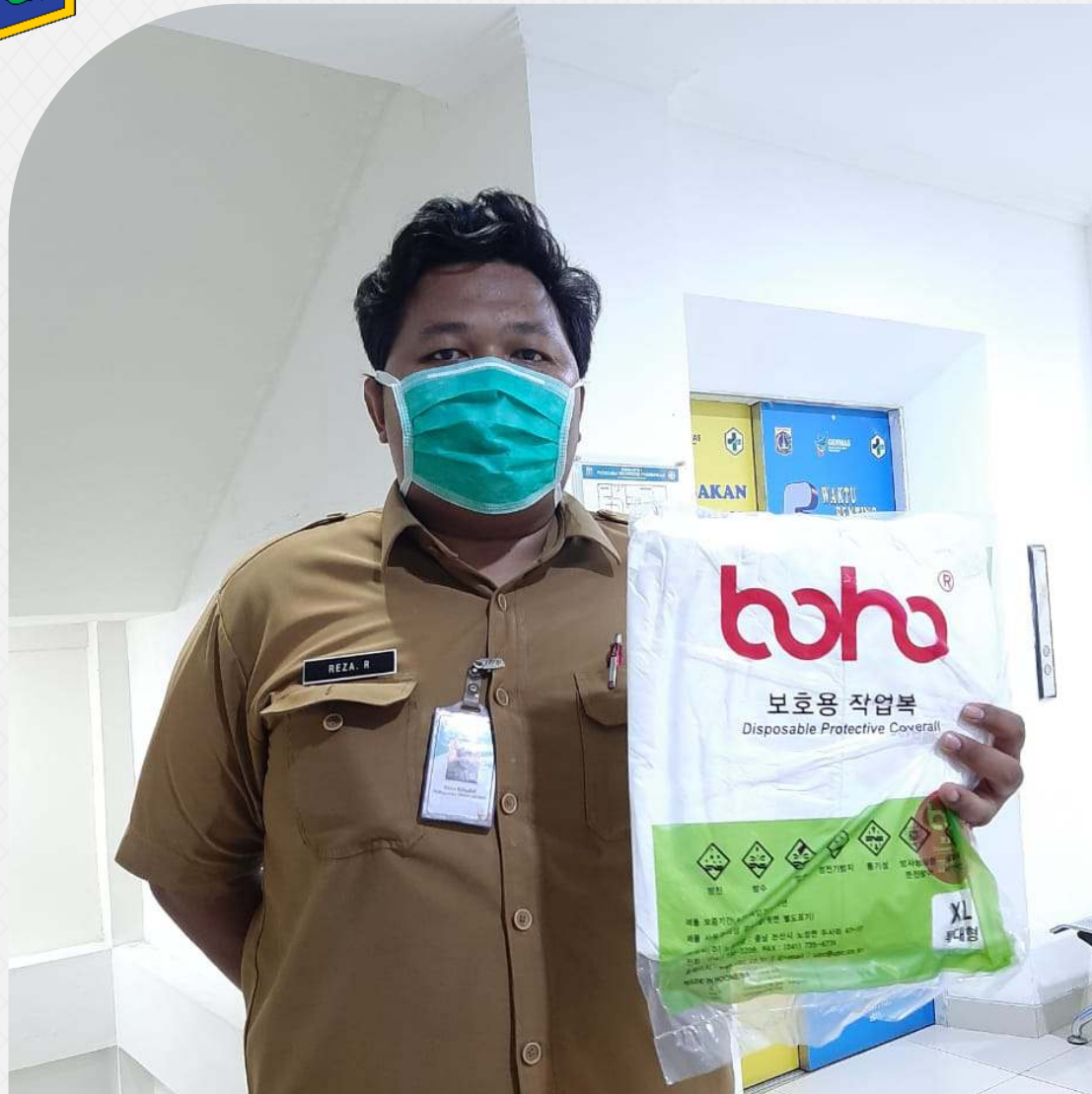
@DKIJakarta

www jakarta.go.id

kota kolaborasi



#jakartatanggapcorona



f y Pemprov DKI Jakarta

@DKIJakarta

www jakarta.go.id

kota kolaborasi

www corona.jakarta.go.id - Hotline Dinkes 081 112 112 112 - Call Center 112